

HA 16 SPX HA 18 SPX



- Max. 34 ft 9 in (10.60 m) horizontal outreach (HA18SPX).
- 45% gradeability.
- 1 ft 2 in (38 cm) ground clearance.
- 4 wheel drive.
- Soft, proportional and simultaneous movements.

ISO 9001
GROUP
PINGUELY
HAULOTTE



ARTICULATED BOOMS



VERTICAL MASTS



TELESCOPIC BOOMS



SCISSOR LIFTS



TRAILERS

Haulotte®

ON THE UP

HA 16 SPX HA 18 SPX

Articulated boom

The Haulotte® advantages

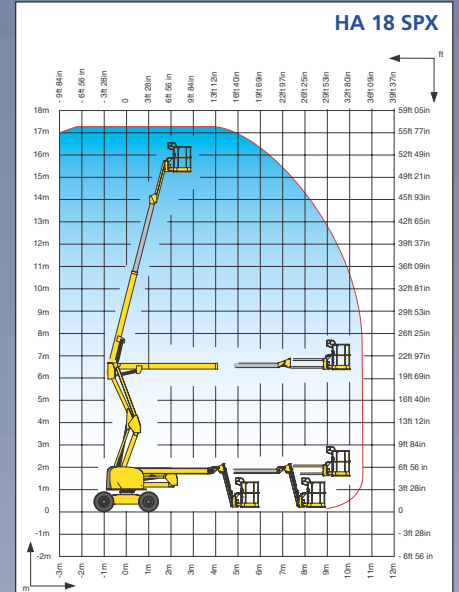
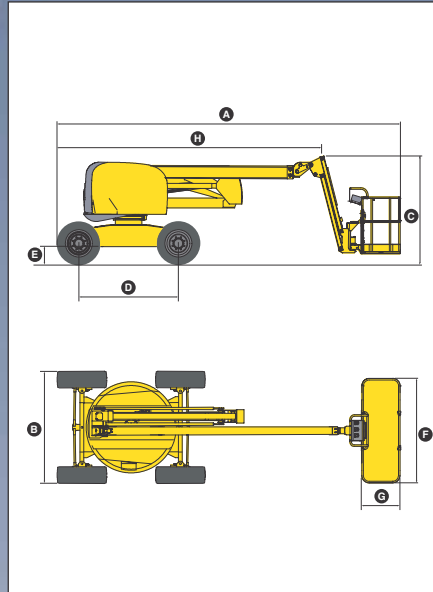
- 52 ft and 57 ft (16 and 18 m) working heights
- Hydraulic differential lock and 1 ft 2 in (38 cm) ground clearance for improved rough terrain capability
- Gradeability up to 45%
- 45 sec. lift speed to full height
- Full proportional controls and simultaneous boom functions improve productivity
- Load control in cage
- Improved working area through a positive / negative articulating fly jib with 140° movement
- Zero tailswing
- 180° hydraulic platform rotation
- Improved design for travel / transport (HA 16 SPX: 5.25 m / 17 ft 3 in transport length)
- Robust, reliable and easy to maintain design
- Improved security due to load limiter in the basket

STANDARD FEATURES

- 4 wheel drive and 2 wheel steering
- 55 l (12 gal) fuel tank
- 5° tilt alarm
- 12 V battery / electrical control system
- Electric emergency group in cage
- Free wheeling device
- Hourmeter
- Slewing block pin
- Towing hooks / lifting eyes

OPTIONS & ACCESSORIES

- 230 V / 115 V - 16 A power line in cage
- Travel alarm
- Rotating beacon
- Working light
- Catalytic exhaust
- Encoded starting device
- Biodegradable hydraulic oil
- Cold countries kit
- Hot countries kit
- Sand tyres
- Road tyres



SPECIFICATIONS

| | HA 16 SPX | | HA 18 SPX | |
|-----------------------------|-------------------------------|-------------|---------------|------------|
| Working height | 16.0 m | 52 ft | 17.3 m | 56 ft 2 in |
| Platform height | 14.0 m | 46 ft | 15.3 m | 50 ft 2 in |
| Maximum outreach | 9.1 m | 29 ft 10 in | 10.60 m | 34 ft 9 in |
| Up and over clearance | 6.60 m / 21 ft 8 in | | | |
| Platform capacity | 230 kg / 507 lb | | | |
| Fly jib range of motion | 140° (+70° / -70°) | | | |
| A Stowed length | 6.65 m | 21 ft 9 in | 7.50 m | 24 ft 7 in |
| B Width | 2.25 m / 7 ft 4 in | | | |
| C Stowed height | 2.20 m / 7 ft 3 in | | | |
| D Wheelbase | 2.0 m / 6 ft 7 in | | | |
| E Ground clearance | 38 cm / 1 ft 12 in | | | |
| F x G platform size | 1.8 m x 0.8 m / 71 in x 32 in | | | |
| Travel / transport length | 5.25 m | 17 ft 3 in | 5.80 m | 19 ft |
| Travel / transport height | 2.16 m / 7 ft 1 in | | | |
| Tailswing | 0 | | | |
| Drive speed | 1.5 / 5.5 km/h | | 0.9 / 3.4 mph | |
| Outside turning radius | 4 m / 13 ft 1 in | | | |
| Inside turning radius | 2 m / 6 ft 6 in | | | |
| Turntable rotation | 359° | | | |
| Hydraulic platform rotation | 180° | | | |
| Engine | Deutz Diesel 38 CV - 28 kW | | | |
| Gradeability | 45% | | | |
| Tyres (foam filled) | SKS Hauler - 14 - 17,5 | | | |
| Hydraulic tank | 100 l / 22 gal | | | |
| Fuel tank | 55 l / 12 gal | | | |
| Weight | 6,700 kg | 14,771 lb | 7,500 kg | 16,535 lb |

