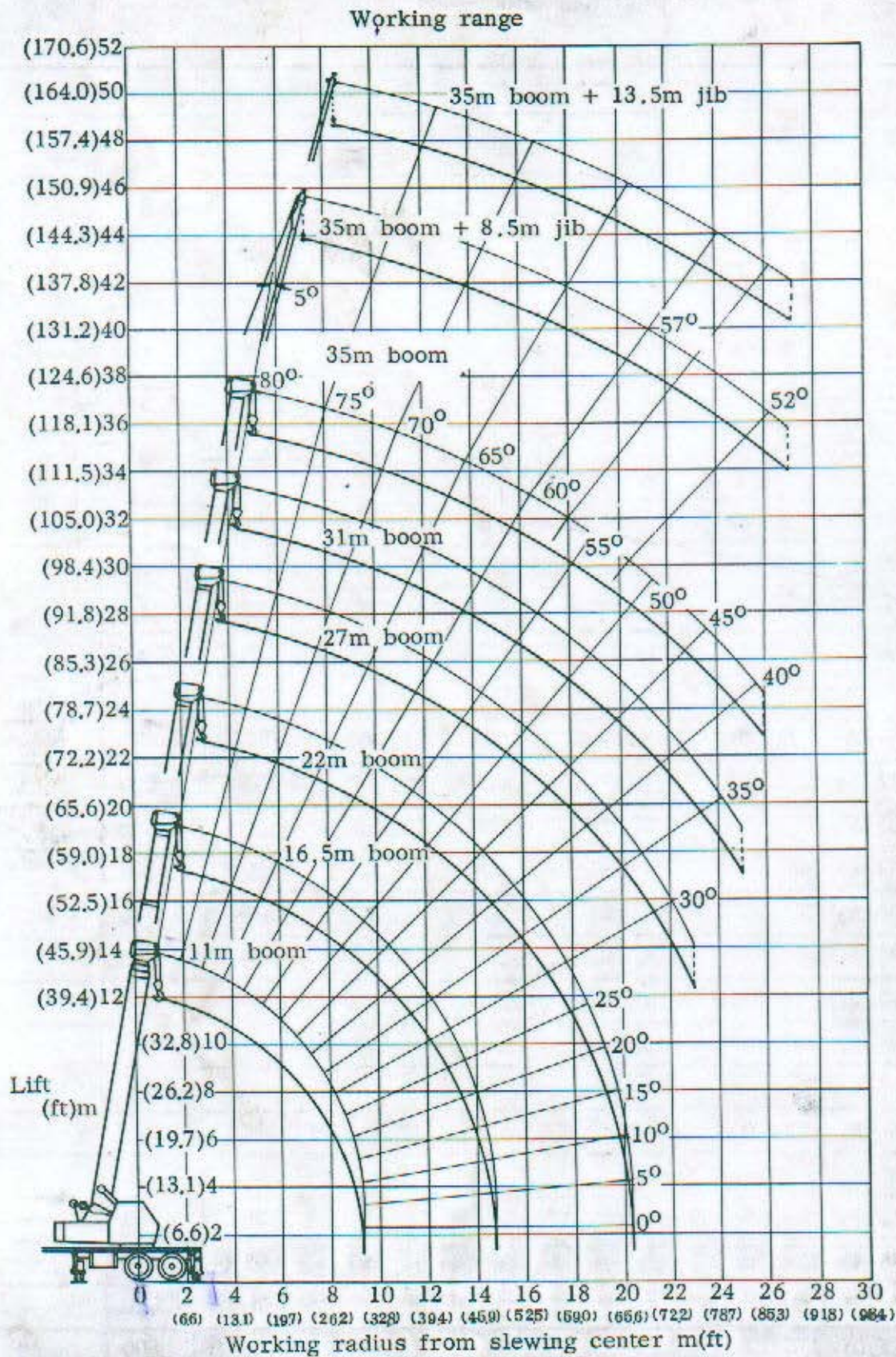


3-2 Working range and rated lifting capacities



Note : This does not include deflection of the boom and the jib.

Rated lifting capacities

Boom

(in kg)

Working Radius	Over side and Over rear						
	With Outriggers						Without Outriggers
m(ft)	11m Boom	16.5m Boom	22m Boom	27m Boom	31m Boom	35m Boom	11m Boom
3.0 (9.8)	40,000						8,000
3.5 (11.5)	40,000	24,000					6,400
4.0 (13.1)	36,400	24,000	20,000				5,100
4.5 (14.8)	33,300	24,000	20,000				4,200
5.0 (16.4)	29,500	24,000	20,000	16,000			3,400
5.8 (19.0)	24,000	24,000	20,000	16,000	12,000		2,500
6.0 (19.7)	22,500	22,500	20,000	16,000	12,000		2,300
6.4 (21.0)	20,000	20,000	20,000	16,000	12,000	8,000	1,900
7.0 (23.0)	16,700	16,700	16,700	16,000	12,000	8,000	1,600
7.2 (23.6)	16,000	16,000	16,000	16,000	12,000	8,000	1,450
8.0 (26.2)	13,550	13,550	13,550	13,550	12,000	8,000	1,000
8.2 (26.9)	13,000	13,000	13,000	13,000	12,000	8,000	
9.0 (29.5)	11,000	11,000	11,000	11,000	10,550	8,000	
10.0 (32.8)		9,000	9,000	9,000	8,900	8,000	
10.6 (34.8)		8,000	8,000	8,000	8,000	8,000	
11.0 (36.1)		7,450	7,450	7,450	7,500	7,550	
12.0 (39.4)		6,250	6,250	6,250	6,500	6,700	
13.0 (42.6)		5,200	5,200	5,200	5,650	5,850	
14.0 (45.9)		4,400	4,400	4,400	4,850	5,100	
16.0 (52.5)			3,150	3,150	3,600	3,950	
18.0 (59.0)			2,200	2,200	2,600	2,950	
20.0 (65.6)			1,400	1,400	1,880	2,180	
22.0 (72.2)				800	1,250	1,550	
23.0 (75.4)				550	950	1,250	
24.0 (78.7)					700	1,000	
25.0 (82.0)					500	800	
26.0 (85.3)						650	

Jib

(in kg)

Boom Angle	Over side and Over rear			
	With Outriggers			
	35m + 8.5m Jib Offset 5°		35m + 13.5m Jib Offset 5°	
	Working Radius (m)		Working Radius (m)	
80°	8,400	4,000	9,600	2,500
77°	11,000	4,000	12,100	2,500
76°	11,500	3,900	13,000	2,500
75°	12,000	3,700	13,800	2,400
74°	12,400	3,650	14,700	2,300
72°	14,400	3,050	15,300	2,200
70°	15,800	2,650	17,800	1,900
68°	17,100	2,300	19,400	1,700
66°	18,300	2,000	20,900	1,550
64°	19,700	1,650	22,500	1,350
62°	21,000	1,350	24,000	1,150
60°	22,300	1,150	25,300	1,000
58°	23,400	950	26,700	850
57°	23,900	850	27,200	700
56°	24,500	800		
54°	25,700	700		
52°	27,000	550		

Notes : 1) The rated lifting capacities are the maximum loads guaranteed on a firm level ground and include the weight of hook block and other lifting equipments.

Hook	for 40,000kg	for 12,000kg	for 4,000kg
Weight (kg)	450	250	120

The capacities in the bold line are based on the structural strength and other capacities do not exceed 75% of tipping loads.